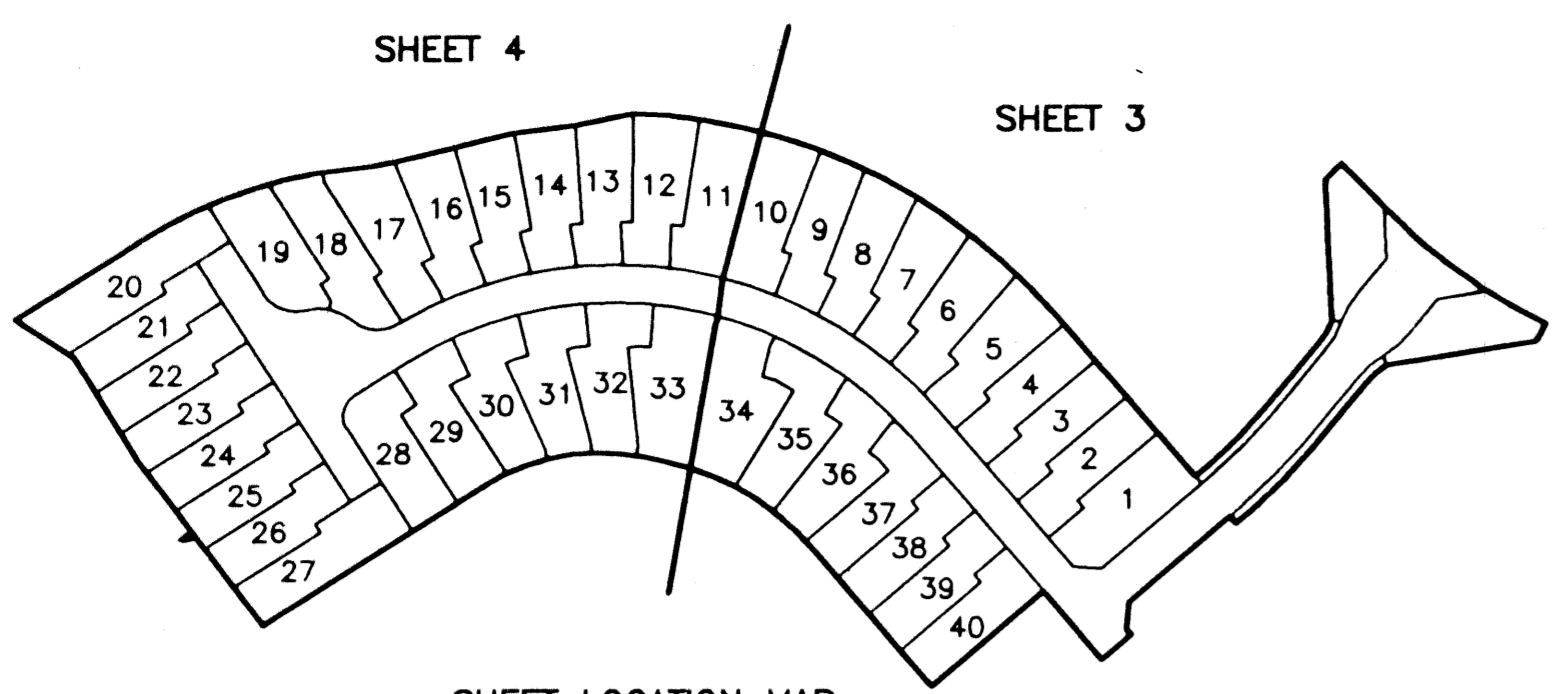


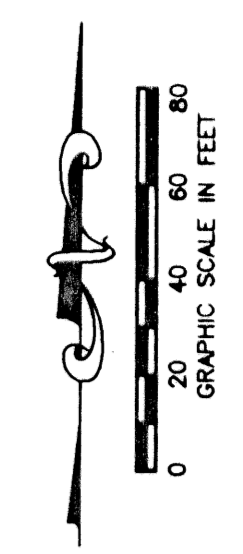
MIRASOL PARCEL THIRTEEN

PART OF GOLF DIGEST P.C.D.
SECTION 4, TOWNSHIP 42 SOUTH, RANGE 42 EAST,
CITY OF PALM BEACH GARDENS,
PALM BEACH COUNTY, FLORIDA
SHEET 4 OF 4



SHEET LOCATION MAP
NOT TO SCALE

MIRASOL
GOLF DIGEST, PCD
NOT PLATTED

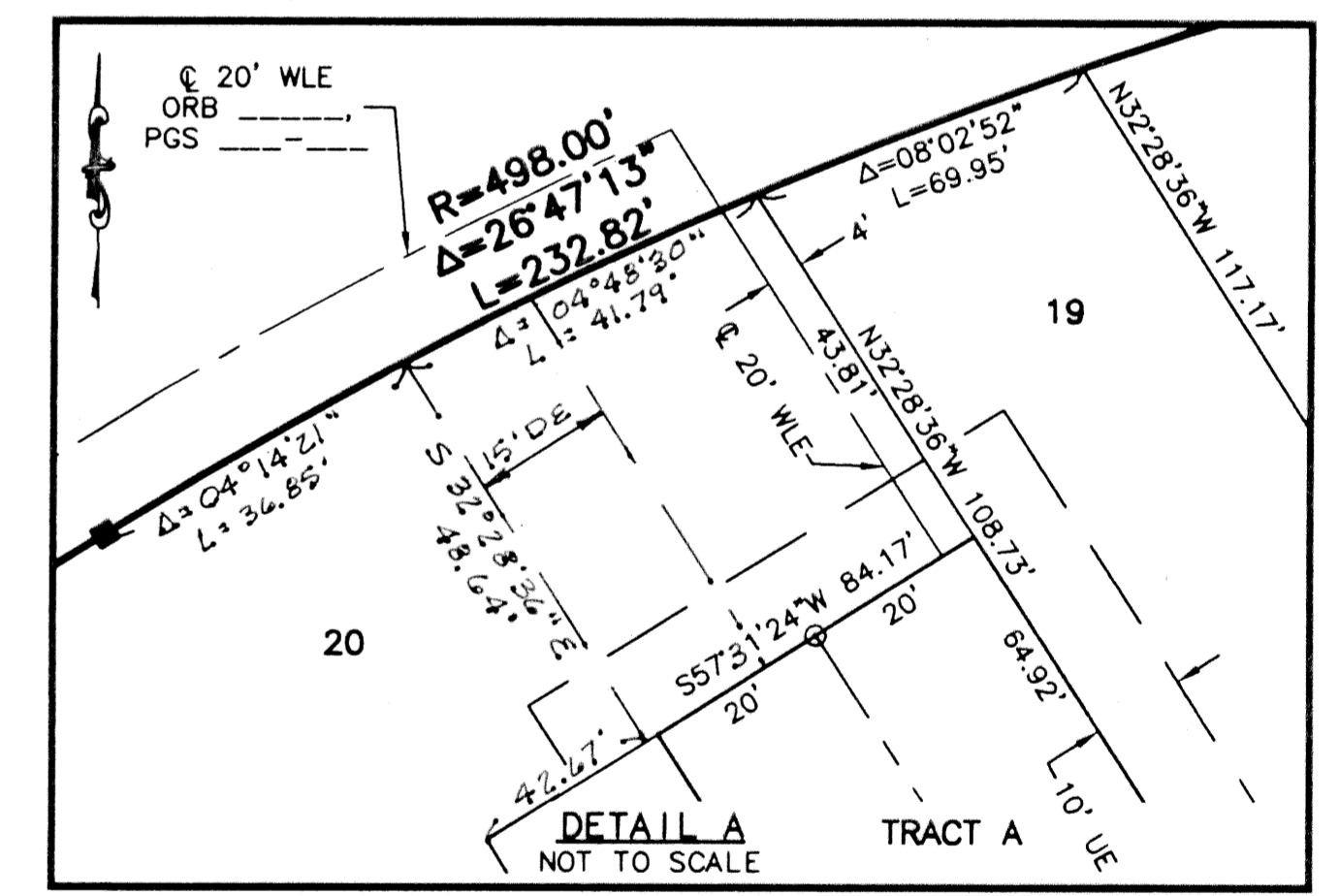
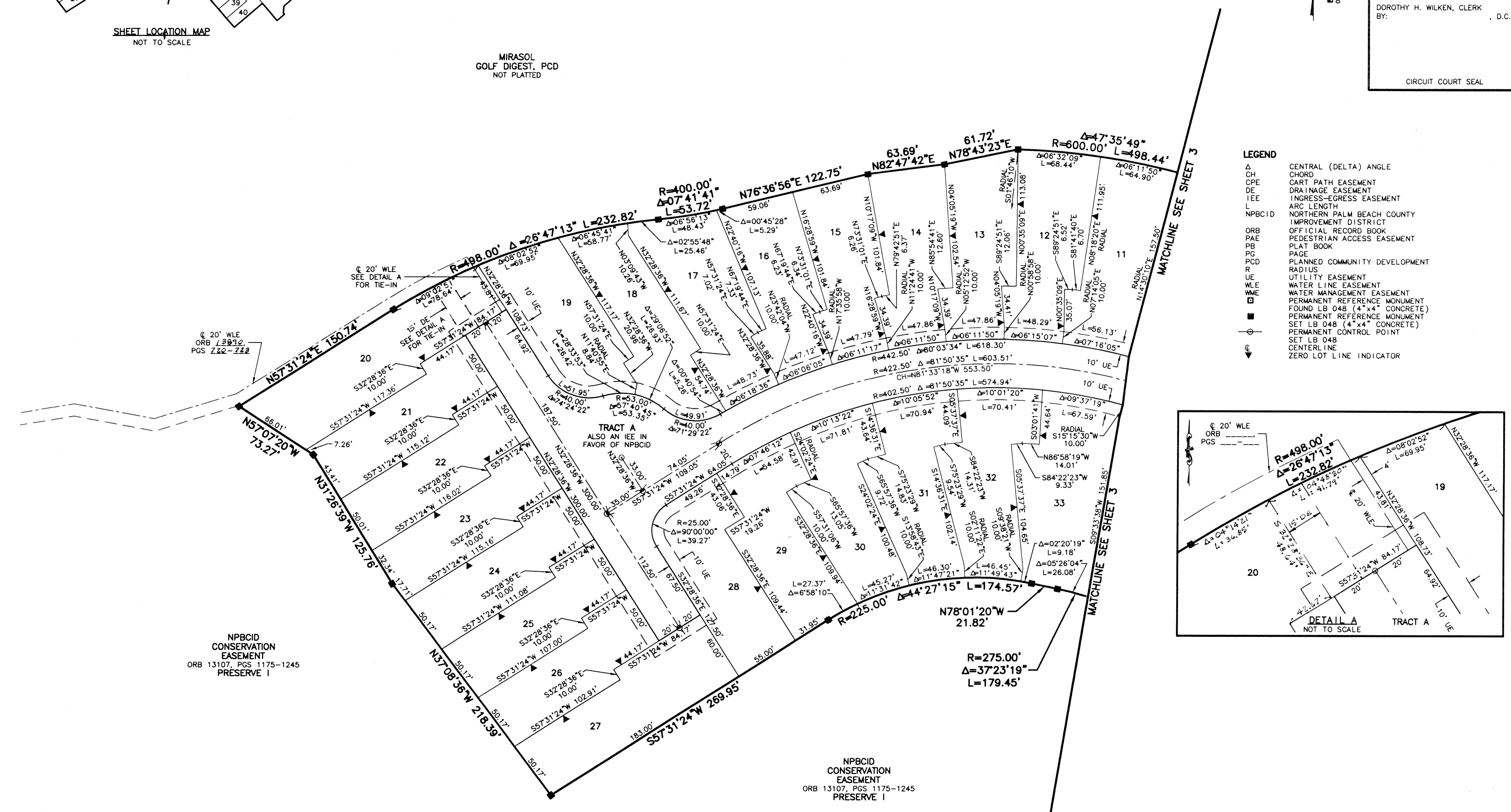


STATE OF FLORIDA
COUNTY OF PALM BEACH
THIS PLAT WAS FILED FOR
RECORD _____
THIS _____ DAY OF _____
AD, 2002 AND DULY RECORDED
IN PLAT BOOK _____ ON PAGES
_____ AND _____
DOROTHY H. WILKEN, CLERK
BY: _____, D.C.

CIRCUIT COURT SEAL

LEGEND

- Δ CENTRAL (DELTA) ANGLE
- CH CHORD
- CPE CART PATH EASEMENT
- DE DRAINAGE EASEMENT
- IEE INGRESS-EGRESS EASEMENT
- L ARC LENGTH
- NPBCID NORTHERN PALM BEACH COUNTY IMPROVEMENT DISTRICT OFFICIAL RECORD BOOK
- ORB ORB PLAT BOOK
- PAE PEDESTRIAN ACCESS EASEMENT
- PB PLAT BOOK
- PG PAGE
- PCD PLANNED COMMUNITY DEVELOPMENT
- R RADIUS
- UE UTILITY EASEMENT
- WLE WATER LINE EASEMENT
- WME WATER MANAGEMENT EASEMENT
- PERMANENT REFERENCE MONUMENT FOUND LB 048 (4"x4" CONCRETE)
- PERMANENT REFERENCE MONUMENT SET LB 048 (4"x4" CONCRETE)
- PERMANENT CONTROL POINT
- SET LB 048
- CENTERLINE
- ◄ ZERO LOT LINE INDICATOR



NPBCID
CONSERVATION
EASEMENT
ORB 13107, PGS 1175-1245
PRESERVE I

NPBCID
CONSERVATION
EASEMENT
ORB 13107, PGS 1175-1245
PRESERVE I

S:\ray\lay\p13\dwg\p13rpo2.dwg 06/07/02 04:50:07 PM EDT

REV: 08-23-02
CAD FILE:
TAYLPA13\PA13RPO2

THIS INSTRUMENT WAS PREPARED BY MARY HANNA CLODFELTER, P.S.M. IN THE OFFICES OF MOCK, ROOS & ASSOCIATES, INC., 5720 CORPORATE WAY, WEST PALM BEACH, FLORIDA 33407.

SCALE:
1"=40'
P.A. NO.:
99368.00
DATE:
MARCH 2002
DRAWING NO.
42-42-04-124

FLORIDA L.B. NO. 48

MOCK • ROOS
ENGINEERS • SURVEYORS • PLANNERS

5720 Corporate Way, West Palm Beach, Florida 33407
(561) 683-3113, fax 478-7248

MIRASOL PARCEL THIRTEEN
PART OF GOLF DIGEST P.C.D.
SITUATE IN SECTION 4,
TOWNSHIP 42 SOUTH, RANGE 42 EAST,
CITY OF PALM BEACH GARDENS,
PALM BEACH COUNTY, FLORIDA